

## Mooring

## Calibration Services



Straininstall has for more than 20 years designed, engineered and delivered complete Anchor Mooring Monitoring & Control System for the Offshore Mobile Rigs, FPSOs, VLCCs and installations with chain/wire moorings. Throughout the years the line tension has always been a topic for discussion, how to calibrate and how to verify.

Straininstall can now provide the services of calibration and verification of the **Mooring Line Tension** based on measuring the individual mooring line's natural swinging frequency. The method of measurement is based on a 'clamp on' sensor on the chain/wire and performing the frequency measurement with an instrument that does Rain Flow Counting, the mooring line being static. The frequency combined with the mass weight of the mooring line and the distance between the winch and the lower fair lead is used for calculating the correct line tension.

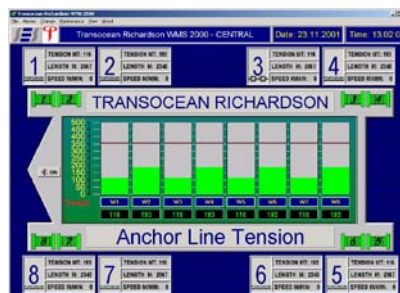
- Calibration & Verification Services
- Site surveys & consultancy
- Systems & support



Straininstall AS is a fully owned subsidiary of Straininstall Group Ltd. and has specialised in load and force measurement. Straininstall AS supplies Monitoring & Control Systems for Winches and Cranes, both for new installations and as retro-fit and upgrades. We have gained a significant experience from a variety of winch manufactures.

Contact Straininstall and we will attend to you request !

Straininstall has a wide range of products and services, visit our WEB site.



A central VDU display example

**Straininstall AS**  
PO Box 58, Teie  
N-3106 Tønsberg  
NORWAY

Tel: +47 33 34 61 00  
Fax: +47 33 32 37 02  
Email: [b.hov@straininstall.no](mailto:b.hov@straininstall.no)

[www.straininstall.no](http://www.straininstall.no)